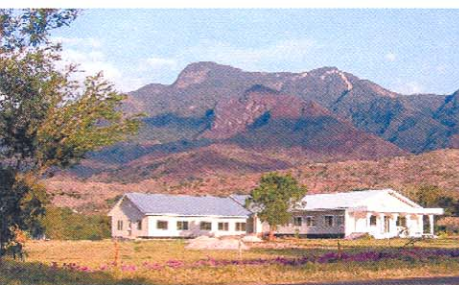


African Seed Health Centre



Sokoine University of Agriculture, Morogoro, Tanzania



Training Services & Hostel Facilities

The African Seed Health Centre (AfSHC) at the Sokoine University of Agriculture (SUA), Morogoro, provides a comprehensive seed health training programme consisting of short term individual/group training courses and long term education through research projects leading to post-graduate qualifications (Diploma, M.Sc., Ph.D. levels) and others.

The seed health courses offered every year are varying in length from a few days to 2 years. Most of the courses have been integrated in the existing M.Sc. course at SUA and have been established in collaboration with the Danish Seed Health Centre for Developing Countries (DSHC), University of Copenhagen, Denmark and the Asian Seed Health Centre (ASHC), University of Mysore, India. The Centre has international hostel facilities for students and visitors.

Individual Training & Postgraduate Courses

Individually tailored training programmes are often the most effective way to solve a training need. In recent years, visitors from different organizations and seed agencies have been trained at AfSHC (B.Sc., extension agencies, the private sector etc.). Practicals include hands-on experience on various problems related to seed-borne diseases.

M.Sc. Course in Crop Science

M.Sc. courses where seed health is included:

- Seed Pathology (20 lectures/20 practical hours) 1 credit
- Plant Mycology (45 lectures/30 practical hours) 2 credits
- Phytobacteriology (45 lectures/10 seminars/20 practical hours) 2 credits
- Plant Virology (20 lectures/20 practical hours) 1 credit
- Pathogenesis and Disease Resistance (45 lectures/30 practical hours) 2 credits
- Plant Nematology (20 lectures/20 practical hours) 1 credit
- Seed Technology (20 lectures/20 practical hours) 1 credit

Diploma Course in Seed Pathology and Seed Health Technology

A proficiency certificate course of 9 months duration, covering concepts of general seed pathology, and modular courses in seed quality and seed health (seed testing, seed mycology, seed bacteriology and seed virology). The first 5 months cover general principles of seed pathology and seed mycology, followed by seed bacteriology (2 months) and seed virology (2 months). Throughout the course the participants conduct laboratory exercises and get hands-on experience in seed health testing of their choice.

Undergraduate Courses

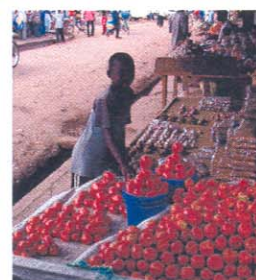
- Plant Pathology (30 lectures/30 practical hours) 1.5 credits
- Seed Technology (2 credits)
- Agricultural Crop Processing (2 credits)

Short Courses

- Orientation of farmers to seed health issues (2 days)
- Seed Pathology and Seed Health Technology (2 weeks)
- Plant Quarantine (2 months)

Research & Publications

The centre conducts research on various aspects, e.g., seed health problems of pasture and vegetable seed crops; emerging seed-borne diseases, impact of seed-borne infections in yield and quality; transmission studies of seed-borne pathogens; seed treatments in the control of plant diseases and mycotoxin producing fungi of major cereal crops. Research findings are published in the form of research articles/technical bulletins/handouts/leaflets/brochures.



Training Services

Address

African Seed Health Centre
Department of Crop Science and Production
Sokoine University of Agriculture
P.O. Box 3005, Morogoro
Tanzania



Contact Information

Dr. R.B. Mabagala
Professor and Coordinator
E-mail: rmabagala@yahoo.com
Phone: +255 232 600 573
Fax: +255 232 600 574
www.afshc.or.tz and www.sehece.org