

ASHS Newsletter

*Dedicated to advancing horticultural research, education,
and application for over 100 years*

Vol. 22, No. 10

October 2006

In this issue:

Professional, Career, and Student Award Nominations Open 1 November 1

Welcome New ASHS Members 2

Reflections 3

Annual Meeting: NE-ASHS 4

Notes from the Archivist 5

Annual Meeting: Southern Region-ASHS ... 5

New Releases: Books, CDs, Periodicals .. 6

Announcements 6

Grants Available 7

People in the News 7

Obituary 7

Congratulations to 2006 ASHS Award Winners 8

Easy Payment Plan Makes Donating "Painless" 11

HortOpportunities 12

Horticultural Science Calendar 15

Postscript: Cucurbitaceae 2006 16

Professional, Career, and Student Award Nominations Open 1 November

ASHS Headquarters announces a call for professional, career, and student award nominations. These nominations will be accepted starting on 1 Nov. 2006, and will be presented during the ASHS Annual Conference, 16–19 July 2007, at the Westin Kierland Resort and Spa in Scottsdale, Ariz. The ASHS Awards Program is a means by which the Society recognizes outstanding member accomplishments in horticultural research, extension, and education. Nominations for most of these categories may be submitted online via the ASHS web site, although a few must still be submitted by mail. Brief descriptions of the awards and nomination deadlines are listed below:

Professional Awards:

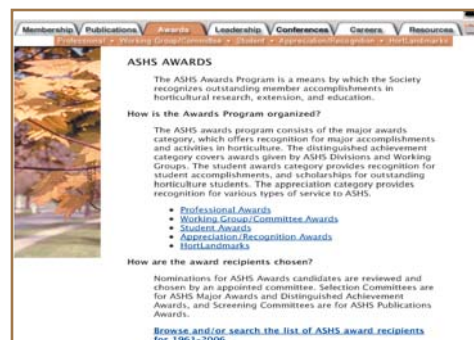
Deadline for both awards: 4 Feb. 2007

Fellows Award

Election as a Fellow of the Society is the highest honor that ASHS can bestow on its members, in recognition of truly outstanding contributions to horticulture and the Society.

Hall of Fame Award

This award is reserved for distinguished persons who have made monumental and unique contributions to the science and profession of horticulture. Its purpose is to educate and inform younger members of the profession and the general public about the important contributions of horticultural pioneers. Since its establishment in 1989, there have been 30 inductees into the ASHS Hall of Fame.



The Awards section of the ASHS web site provides complete descriptions for all ASHS awards. Nomination forms are accessed through this section, and nominations for most awards may be completed online. See page 10 for details about submitting nominations online.

Career Awards:

Deadline for career awards: 4 Feb. 2007

Outstanding Extension Educator

This award recognizes an educator who has made an outstanding and valuable contribution to horticultural science extension education for a period of 10 or more years.

Outstanding International Horticulturist

This award recognizes an international horticulturist who has made an outstanding and valuable contribution to international horticultural science, education, research and/or outreach for a period of 10 or more years.

Outstanding Graduate Educator

This award recognizes an educator who has had a distinguished and outstanding graduate education teaching career in

Continued on page 9

Welcome New Members

(as of October 2006)

Shawna Bushey, Santa Maria, Calif.

Hui-Na Chou, Taichung, Taiwan

Michael Dobres, Philadelphia, Pa.

Ingrid Earnst, Longmont, Colo.

Frederick Hempel, Alameda, Calif.

Bryan Hopkins, Idaho Falls, Idaho

Mary Kemi Idowu, Ile-Ife, Nigeria

Vera Krischik, St. Paul, Minn.

Yung-I Lee, Taipei, Taiwan

Sohrab Maddahi, Tehran, Iran

Samatha R. Moore, Morgantown, W.Va.

Suzanne O'Connell, Raleigh, N.C.

Enzo Perri, Cosenza, Italy

Carrie Reinhardt-Adams, Gainesville, Fla.

Hamidou F. Sakhanokho, Poplarville, Miss.

Sara Searcy, Santa Maria, Calif.

Jennifer Swenson, Horseshoe Bend, Idaho

Patrice This, Montpellier, France

Ching-Jung Tsai, College Station, Texas

New Corporate Member:

Pelarica, S.A., Cartago, Costa Rica

Representative: Alex Meneses Zuniga

Deadlines to Remember:

(subject to change)

For ASHS–2007 Annual Conference Deadlines

Abstract Submissions	15 Feb.
Workshop Proposals	15 Feb.

2007 ASHS Award Nominations: Deadlines

ASHS Professional and Career Awards	4 Feb.
ASHS Collegiate Scholars	11 Feb.
Outstanding Undergraduate Students	11 Feb.
Student Travel Grants	4 Mar.

Notice to ASHS Members

The *ASHS Newsletter* will be converting to an electronic-only format starting Jan. 2007, as voted on by the ASHS Board of Directors.

Starting with the Sept. 2006 issue, all ASHS members will receive an electronic version via e-mail in addition to the print edition through the Dec. 2006 issue.

If you wish to continue receiving a mailed, printed edition after Dec. 2006, you must send a request to ASHS Headquarters.

Send requests via e-mail to Jean Porter at jporter@ashs.org or call or write ASHS Headquarters with your request.

ASHS NEWSLETTER • ISSN 0882-8024

Publisher: Michael W. Neff • **Newsletter Editor:** Sylvia DeMar

The *ASHS Newsletter* (ISSN 0882-8024) is published monthly by the American Society for Horticultural Science, 113 South West St., Suite 200, Alexandria, Va. 22314, USA; phone 703.836.4606; fax 703.836.2024; e-mail ashs@ashs.org. All Members of the Society receive the *ASHS Newsletter* through payment of annual dues, of which \$5 is allocated for the subscription (\$2.50 for Student and Emeritus Members). Opinions expressed by contributors to the *ASHS Newsletter* do not necessarily reflect the position or official policy of either their employers or the Society. **Post office entry:** Periodicals postage is paid at Alexandria, Va. **Postmaster:** Please send address changes to: *ASHS Newsletter*, 113 South West St., Suite 200, Alexandria, Va. 22314, USA.

Reflections

William R. Woodson
ASHS President



Horticulture in the Developing World



I'm writing this newsletter article at 38,000 feet in the middle seat of the economy section of a Boeing 747. If you've ever been in the middle seat in the economy section at 38,000 feet for a 14-hour flight then you share my pain. I'm returning from Ho Chi Minh City (Saigon for those of us who grew up in the 60s) by way of Hong Kong. Vietnam is a great example of a nation that is lifting itself out of economic depression through the entrepreneurship of its people. Agriculture is playing a huge role in the growing economic prosperity of this developing nation. Vietnam exports significant amounts of coffee, fish, and shrimp, and horticultural products. The range of horticultural products in Vietnam is staggering. Tropical fruits, flowers, and vegetables are produced throughout the country with markets ranging from local stands to sophisticated exporters. Prior to visiting Vietnam, I spent a few days in Taiwan at National Taiwan University. Taiwan enjoys a very diverse and expanding economy, but certainly sees agriculture and horticulture as a very significant part of its economic fabric as well.

My visit to Vietnam and Taiwan only served to remind me that horticulture has a huge role to play in the health and well-being of our world. Horticultural products offer both growing and mature societies improved health and prosperity. The production of horticultural crops offers to farmer households in developing nations the opportunity for economic and social advancement. We've seen it happen in many parts of Asia and the Indian subcontinent. In spite of this, horticulture has received very little attention

Photo: The horticultural crops of Vietnam were featured in the April 1999 issue of *HortScience*. Reprints of the article may be ordered through the online version of *HortScience* at www.ashs.org/hort-science.

from the agricultural development community. This is changing, and I encourage ASHS members to stay tuned and engaged.

Last year, a Global Horticulture Assessment was sponsored by the U.S. Agency for International Development (USAID) with support from the Asian Vegetable Research and Development Center (AVRDC, Taiwan), Michigan State University, the University of California at Davis, the University of Hawaii, and Purdue University. More than 750 participants from 60 countries provided direct input to this assessment, which can be accessed at the AVRDC web site. This assessment raised eight primary issues, which were shared throughout the world. These included: 1) market systems, 2) postharvest systems and food safety, 3) genetic resource conservation and development, 4) sustainable production systems and natural resources management, 5) capacity building, 6) enabling environment, 7) gender equity, and 8) nutrition and human health. ASHS members around the world are in positions to have an impact on each of these areas of concern.

**[H]orticulture has a huge role
to play in the health and
well-being of our world.**

A tangible outcome of this assessment is the Global Horticulture Initiative (GHI). This initiative seeks to highlight the opportunities for horticulture production to make a significant and meaningful difference in the lives and livelihoods of people in developing nations. Further, the GHI seeks to marshal significant resources for research and education projects aimed at addressing the issue areas identified through the assessment process. As president of ASHS, I will continue to be an advocate for increased funding for USAID to expand cooperative research support projects to include horticultural crops. In addition to federal funding

Continued on page 4

Annual Meeting of the Northeast Region American Society for Horticultural Science (NEASHS)

4–6 January 2007

University of Maryland, College Park

Tentative schedule of events:

Thursday

3:00 to 6:00 pm—Arrive in College Park, registration and poster setup at the hotel.

7:00 to 8:30 pm—Reception and Poster Session: light food provided and cash bar available.

Friday

Morning—paper session on campus, including graduate student paper competition.

Lunch at the Student Union (on your own).

Tour of the Beltsville Agricultural Research Center (BARC).

Saturday

Business meeting (breakfast included) and student award presentations at the hotel paper session.

Conference Registration Fee:

\$80 (\$50 for students)

Includes the welcoming reception, breakfast at the business meeting on Saturday, transportation on Friday, and all sessions. Dinners, Friday breakfast, and lunch are on your own.

For additional information and to register contact: carolynd@umext.umass.edu

Conference Hotel:

Best Western College Park Inn
8601 Baltimore Avenue
College Park, Md.
Phone 301-474-2800, Fax 301-474-6113
www.bwcollegepark.com

Hotel rate: \$79 (plus tax) single or double

To get this rate, you must reserve by 4 Nov. 2006.

Call the toll-free number (1-800-442-1644) and request the group rate code 10080-ASHS.

Note: You must reserve by phone—online reservations will not get the reduced rate.

Horticulture in the Developing World

Continued from page 3

for these issues, I am encouraged by the increasing attention many foundations are paying to agriculture and development, including the Bill and Melinda Gates Foundation. As members of ASHS we have growing opportunities to influence the thinking of these agencies by highlighting the many tangible benefits from developing horticultural industries throughout the world. The Global Horticultural Assessment is a great example of this. As horticultural scientists, we have tremendous opportunities to conduct relevant research and educational programs that benefit farmers and families around the world. Our work has never been more important!

William R. Woodson
woodson@purdue.edu

Web Resources

**Asian Vegetable Research and Development
Center (AVRDC)**
www.avrdc.org

Bill and Melinda Gates Foundation
www.gatesfoundation.org

Global Horticulture Initiative
www.globalhort.org

**U.S. Agency for International
Development (USAID)**
www.usaid.gov

Display Advertising in the ASHS Newsletter

Display ads can be either black and white only or 2- color (black and green). Rates:

Size	Dimensions (inches)	Price
1/4 page	3.75 x 5	\$325
1/2 page	7.5 x 5 or 3.5 x 10	\$550
3/4 page	7.5 x 7.5	\$700
Full page	7.5 x 10	\$1000

For additional information about placing a display ad, contact ASHS Headquarters, 113 S. West St., Ste. 200, Alexandria, VA 22314; phone 703.836.4606 ext. 327; fax 703.836.2024; e-mail newsletter@ashs.org

Notes from the Archivist

Donald N. Maynard
ASHS Archivist/Historian



50 Years Ago in ASHS

From the 1 April 1956 Newsletter:

“One hundred persons attended the annual meeting of the Northeast Region at the Biological Laboratories, Harvard University, Cambridge Mass., 27–28 Jan. 1956. Seventeen scientific papers and progress reports were presented in the Fruit Section, 16 in the Vegetable Crops Section, and 18 in the Floriculture and Ornamental Horticulture Section. At the general evening session, Chairman Grant Snyder read a paper entitled ‘What is the future of horticulture in the Land Grant university?’ and this was followed by a thorough discussion of the subject. No summer field trip is planned in view of the Storrs meeting. Officers elected for the ensuing year were: Chairman, C.A. Eaves; Vice Chairman, E.J. Rasmussen; Secretary-Treasurer, E.M. Meader, and Executive Committee Member, Grant B. Snyder.”

“The 18th Annual Meeting of the Southern Region was held 6–8 Feb. at Atlanta, Georgia. The program consisted of two round-table discussions, eight sectional sessions, and an all-day tour to the Ida Cason Gardens, Chipley, Ga. One hundred and five members were present at the annual banquet. Officers for 1956–57 are as follows: Chairman, T.P. Hagler; Vice Chairman, G.F. Potter; Secretary-Treasurer, J.B. Edmond; Sectional Chairman, E.F. Savage (Pomology); E.M. Emmert (Vegetable Crops); W.D. Kimbrough (Floriculture and Ornamental Horticulture; and H.W. Hoover (Handling and Processing).”

“The Caribbean Region is meeting at Antigua, Guatemala, 3–10 Apr. Wilson Popenoe writes that a widespread attendance is expected from Florida, California, El Salvador, Honduras, Nicaragua, Costa Rico, Mexico, and of course, Guatemala. Excursions to regions of great horticultural

interest will be a feature of the meeting. It will undoubtedly be a most successful gathering.”

“The Western Region is scheduled to meet 11–16 June at the University of Washington, Seattle, Wash. The meeting will consist of submitted papers, a breakfast for Extension horticulturists, a symposium with the Physiologists on the subject, ‘Environmental Factors and Plant Growth’. An all-day field trip is planned for June 15. There are, by the way, 491 members on the mailing list of this region. (In case you are interested and we hope you are, plans are already being formulated in California and the West for our 1957 annual meeting at Palo Alto.)”

Archivist Note:

Regional groups have always been an important part of ASHS. Reports in the 1 Apr. 1956 *ASHS Newsletter* indicate considerable activity in four regional groups. Today, only the Northeast and the Southern Regions are active. The Caribbean Region is now an entirely separate organization—the InterAmerican Society for Tropical Horticulture (ISTH)—to which many ASHS members belong. The 2005 ISTH Annual conference (10–14 Oct. 2005, Boca Chica, Dominican Republic), which I attended, was well organized and sessions were lively. Each conference* is unique because of the culture of the host country. The Western Region, unfortunately, has not been active in recent years.

—Donald N. Maynard

DMaynard@ufl.edu

*The InterAmerican Society for Tropical Horticulture held its most recent conference from 24–30 Sept. 2006 at the Hotel Intercontinental, Isla Verde, San Juan, Puerto Rico.

67th Annual Meeting of the Southern Region American Society for Horticultural Science (SR-ASHS)

3–5 February 2007
Mobile, Alabama

For additional information contact David Wm. Reed, dwreed@tamu.edu

or visit the SR-ASHS web site www.srashes.org

New Releases: Books, CDs, Periodicals

Cornell University NYSAES:

Guide to the Plant Communities of the Central Finger Lakes Region

(2006) 127 p., appendices, spiral bound, \$17.95

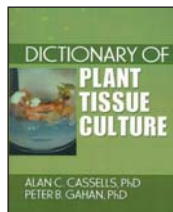
This book provides an introduction to the major types of plant communities in the region and where in the landscape they occur. The book is written primarily for those without a background in botany or plant ecology, but should also be of interest and a reference source to naturalists and biologists.

The *Guide to the Plant Communities of the Central Finger Lakes Region* and supporting material was developed, written and prepared by **Charles L. Mohler**, senior research associate in the department of crop and soil sciences; **Peter L. Marks**, professor in the department of ecology and evolutionary biology; **Sana Gardescu**, research associate in the department of ecology and evolutionary biology, College of Agriculture and Life Sciences, Cornell Univ., Ithaca, NY.

Order online via the NYSAES web site.

www.nysaes.cornell.edu/store/catalog

Dictionary of Plant Tissue Culture. Alan C. Cassells and Peter B. Gahan. 2006. The Haworth Press, Inc., 10 Alice St., Binghamton, NY 13904-1580; 1-1.800.HAWORTH; www.haworthpressinc.com; getinfo@haworthpressinc.com. viii + 265 p. ISBN 13-978-1-56022-919-3. \$29.95 softcover.



Announcements

SNA Announces New Officers

Officers of the Southern Nursery Association (SNA) who will serve for the 2006–07 term were elected on 12 Aug. 2006 during SNA's 107th annual meeting held in Atlanta, Ga. The new officers are listed below.

President and CEO—D.E. “Skeeter” McCorkle II, McCorkle Nurseries, Inc., Dearing, Ga.

Vice President, Director Chapter 4—William M. Turk, Martin’s Nursery, Semmes, Ala.

Director Chapter 1—Eelco H. Tinga, Jr., Tinga Nurseries, Castle Hayne, N.C.

Director Chapter 2—George Hackney, Hackney Nurseries, Greensboro, Fla.

Director Chapter 3—Jim Wallitsch, Wallitsch Garden Center, Louisville, Ky.

Immediate Past President—William J. Boyd, Flower City Nurseries, Smartt, Tenn.

11 Oct. 2006, Atlanta, Ga.

www.sna.org

Abstract Deadline Extended

The deadline for submitting abstracts to the **International Symposium on Medicinal and Nutraceutical Plants**, to be held 19–23 Mar. 2007 in Macon, Ga., has been extended from 15 Oct. to 30 Nov. 2006. For up-to-date information on the symposium, visit the web site.

www.ag.fvsu.edu/ishsmanp.html

Skinner Nurseries Opens Second Orlando Location

Skinner Nurseries has announced the acquisition of a new landscape distribution center in Orlando. Formerly West Orange Nursery, Inc., the new center is located in the growing west side of town and officially opened for business on 25 Sept. The new Orlando branch encompasses a 5-acre yard, which will stock annual color and up to 8” caliper container trees.

Oct. 2006—Orlando, Fla.

www.skinnernurseries.com

IPM Scope™



TOP 10 New Products of 2006 World Ag Expo

Powerful Scope, Powerful Software

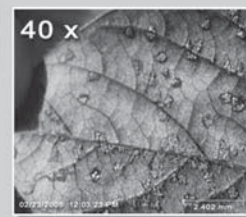
Your portable and affordable digital microscope solution

\$299

The **IPM Scope** combines a digital camera, precision optics, and LED lighting into a powerful handheld microscope and imaging software package. Zoom in with its versatile 40 - 140X magnification on fine details of plant disease symptoms, insects, or anything else too small to see with the naked eye. Instead of straining to look into a tiny eyepiece, place the IPM Scope over the leaf and view the magnified image right on your computer screen. Capture still images, easily add descriptive labels, make measurements, or even draw right on the image!

Features

- › View live images on the computer screen
- › 40 - 140x magnification
- › Completely portable with a laptop computer
- › Archive still images or send files via e-mail
- › Labels, markers, time stamps, and measurement scale
- › Draw directly on the live image



Spectrum Technologies, Inc.

12360 South Industrial Dr. East Plainfield, Illinois U.S.A. 60585
800-248-8873 Fax: 815-436-4460
www.specmeters.com

Grants Available

CSREES Funding Available

The Cooperative State Research, Education, and Extension Service (CSREES) requests applications for the **Regional Integrated Pest Management Competitive Grants Program for FY 2007** to support the continuum of research and extension efforts needed to increase the implementation of integrated pest management (IPM) methods. The program supports projects that develop individual pest control tactics, integrate individual tactics into an IPM system, and develop and implement extension education programs. The program is administered by the land-grant university system's four regional IPM Centers (North Central, Northeastern, Southern, and Western) in partnership with CSREES. In FY 2007, CSREES anticipates that about \$755,000 will be available for support of the Regional IPM Competitive Grants Program—North Central Region. *Letters of intent for this program are due on 31 Oct. 2006. The application deadline is 30 Nov. 2006.*

For details about this and other funding opportunities, visit the CSREES web site.

www.csrees.usda.gov

Farmer–Rancher Grants

Farmers, ranchers, and agricultural professionals are eligible for funding from the USDA's Western Region Sustainable Agriculture Research and Education (SARE) program. Grant recipients are eligible for up to \$15,000 as individuals and for \$30,000 for groups of three or more working together on a project, according to Western SARE representatives at UC Davis.

"Funding can be requested for research into production practices, business development, and marketing alternatives," said David Chaney, education coordinator for the University of California's Sustainable Agriculture Research and Education Program and the Western Region SARE representative. "We want to alert growers and ranchers in the Western United States that 6 Dec. is the deadline for these very useful grants."

Dec. 6 is also the deadline for "Professional + Producer" grant proposals. Under those grants, agricultural professionals such as UC Cooperative Extension (UCCE) educators or Natural Resources Conservation Service employees coordinate the projects with farmers or ranchers serving an advisory role. The same funding levels apply, depending on the number of producers involved.

A recent grant recipient in California is **Jeff Mitchell***, a vegetable crops specialist based at the Univ. of California's Kearney Agricultural

*ASHS member.

Center near Parlier (Professional + Producer grant, "Conservation tillage forage production in California's San Joaquin Valley").

USDA's SARE program helps advance farming systems that are profitable, environmentally sound and benefit communities through a national research and education grants program. The program, part of USDA's Cooperative State Research, Education and Extension Service, funds projects and conducts outreach designed to improve agricultural systems.

The application deadline for both grants is 6 Dec. 2006. Additional information is available on the web or by calling the Western SARE office at Utah State University, (435) 797-2257.

Oct. 2006

wsare.usu.edu/grants

People in the News

Oregon State University Dept. of Horticulture

Oregon State University's Department of Horticulture is pleased to announce the following faculty promotions:

Neil Bell has been promoted to Senior Instructor.

Steve Castagnoli* has been promoted to Associate Professor and granted indefinite tenure.

Dan McGrath has been promoted to Professor.

Linda McMahan* has been granted indefinite tenure.

Steve Renquist has been granted indefinite tenure.

Alex Stone has been promoted to Associate Professor and granted indefinite tenure.

Wei Yang* has been promoted to Associate Professor and granted indefinite tenure.

Hiro Nonogaki, promoted to Associate Professor and granted indefinite tenure. Nonogaki is also invited to give a lecture during the 8th National Symposium on Seed, Transplant and Stand Establishment of Horticultural Crops, which will be held 3–6 Dec. 2006 in San Antonio, Texas. For more information about the symposium, visit the web site.

<http://sest2006symposium.tamu.edu>.

Also, Oregon State University's Department of Horticulture is pleased to announce that **Jing Sun**, an undergraduate in Hiro Nonogaki's lab, has been awarded the Department of Microbiology 2006–07 Microbiology Scholarship and that **Tom Cook** has been awarded the Distinguished Service Award by the Golf Course Superintendents Association of America (GCSAA). Tom received the award during the 2006 GCSAA Education Conference and Golf Industry Show in Atlanta.

Texas A&M University

Dan Lineberger* has been selected as the recipient of a 2006 Texas A&M Association of Former Students Distinguished Achievement Award for Teaching. This honor is in recognition of dedication, performance, and commitment to teaching.

Ohio State University

William Randle* has accepted the position as the new Chair of the Ohio State University Horticulture and Crop Science Department. His appointment becomes effective on 1 Nov. 2006.

Floriculture molecular biologist **Michelle Jones*** has been promoted to Associate Professor in the Ohio State Horticulture and Crop Science Department.

Molecular geneticist **Eric Stockinger** has been promoted to Associate Professor in the Ohio State Horticulture and Crop Science Department.

Sept. 2006

hcs.osu.edu/news/

University of Vermont

Fred Magdoff was presented with the Hubert W. Vogelmann Award for Excellence in Research and Scholarship at the Honors Day Ceremony on 12 Apr. 2006. This award recognizes a faculty member in the College of Agriculture and Life Sciences for outstanding effort and achievement in research and scholarship.



*ASHS members.

Obituary

Ellen G. Sutter

Professor **Ellen G. Sutter**, University of California, Davis (UC Davis) died on 3 Nov. 2005 in Davis, Calif. She earned a PhD in floriculture and ornamental horticulture from Cornell University before she joined the Department of Pomology at UC Davis, that later became part of the Department of Plant Sciences. Her research focused on the acclimatization of plants produced by in vitro methods. She analyzed possible factors for the sensitivity of plants when they are removed from culture. She also studied the basis for the formation of adventitious roots. Sutter was devoted to teaching and called classroom instruction the most rewarding component of her work. She taught at UC Davis for 23 years and served as director of the UC Davis Teaching Resources Center from 2002–05. Sutter was an ASHS Member from 1978–2003.



Congratulations to the Following 2006 ASHS Award Winners

Honorary Member

Paul Soniat, 2006 William A. "Tex" Frazier Lecturer, was named an Honorary Member of the Society at the 2006 ASHS Annual Conference.



Commercial Horticulture Working Group Distinguished Achievement Award

David Monks

Consumer Horticulture Working Group Distinguished Achievement Award

Richard E. Durham

Ornamental/Landscape and Turf Working Group Distinguished Achievement Award

Harold Pellett

Dr. Pellett was the 2006 B.Y. Morrison Lecturer at the ASHS Annual Conference.

Nursery Crops Working Group Distinguished Achievement Award

Two awards were presented in 2006

Larry J. Kuhns

Joseph C. Neal

Kenneth Post Award for Graduate Research in Floriculture

Lee Ann Pramuk and Erik S. Runkle

Modeling growth and development of celosia and impatiens in response to temperature and photosynthetic daily light integral. *J.AMER.SOC.HORT.SCI.* 130(6)813-818.

ASHS Extension Division

Outstanding Extension Publication Awards

Awards were presented during the Extension and Industry Division Dinner at the 2006 ASHS Annual Conference in New Orleans.

Book: *Midwest Grape Production Guide.* Imed E. Dami, Bruce Bordelon, David Ferree, Maurus Brown, Michael A. Ellis, Roger N. Williams, and Douglas Doohan.

Bulletin: *Designing, Constructing, and Maintaining Bermudagrass Sports Fields.* Bert McCarty, Grady Miller, Clint Waltz Jr., and Trent Hale.

Fact Sheets: *Weeds of Container Nurseries.* Joseph C. Neal and Jeffrey F. Derr.

Leaflet: *Bt Basics for Vegetable Integrated Pest Management.* Brent Rowell and Ricardo Bessin.

CD-ROM: *Mississippi Master Gardener: Training Resources CD-ROM, Publication #M1368.* Lelia Scott Kelly and Julie Sexton.

Slide Set/PowerPoint Presentation: *Georgia Gold Medal Winners.* Gary L. Wade and Sharlys Crisafulli.

Web site: *Watermelons* <http://watermelons.ifas.ufl.edu>. Donald N. Maynard and Joel W. Parlin.

Video: *Worker Health and Hygiene Training Manual for Florida Produce Industry.* Amy Simonne, Jeffrey K. Brecht, Mark A. Ritenour, Steven A. Sargent, Keith Schneider, Bill Kelsey, and Al Williamson

Industry Division Student Travel Grant

Leah Grunzke, Montana State University



Professional, Career, and Student Award Nominations Open 1 November

Continued from page 1

horticultural science for a period of 10 or more years.

Outstanding Researcher

This award recognizes a horticultural crops scientist who has had an outstanding record in research on one or more horticultural crops and in one or more areas of horticultural research for a period of 10 or more years.

Outstanding Industry Scientist

This award recognizes a horticultural crops scientist working in the private sector who has made outstanding and valuable contributions to horticultural science, the horticultural industry, and the horticultural profession for a period of 10 or more years.

Outstanding Undergraduate Educator

This award recognizes an educator who has had a distinguished and outstanding undergraduate education teaching career in horticultural science for a period of 10 or more years.

Student Awards:

ASHS Scholars Award *Deadline: 4 Feb. 2007*

The award was established by the ASHS Board of Directors for the purpose of recognizing and supporting scholastic achievement and to encourage career development in horticultural science at the undergraduate level.

E. Ted Sims, Jr. Memorial Scholarship *Deadline: 4 Feb. 2007*

Awarded to a junior or senior, full-time student (minimum 12 credit hours). Applicants must be nominated by the

chair/head of the department in which they are majoring, but only one applicant may be nominated per department.

Collegiate Scholars Award *Deadline: 11 Feb. 2007*

This award honors the academic achievements of junior and senior undergraduates from departments of horticulture, or of plant and crop science, who are majoring in horticulture.

Outstanding Undergraduate Horticulture Student *Deadline: 11 Feb. 2007*

The ASHS Outstanding Horticulture Student Award officially recognizes exceptional undergraduate horticulture students in baccalaureate programs.

Student Travel Grants *Deadline: 4 Mar. 2007*

To be eligible, students must be enrolled in horticultural science as a major course of study and must have submitted an abstract title (or complete abstract) for presentation at the ASHS Annual Conference.

2006 ASHS Industry Division Student Travel Grant *Deadline: 18 Mar. 2007*

This award is open to all undergraduate and graduate horticulture students. The award is based on the following: a) GPA; b) letter of recommendation from undergraduate advisor or faculty member; and c) 500-word essay outlining interest in horticulture and career goals



The ASHS Awards Program is a means by which the Society recognizes outstanding member accomplishments in horticultural research, extension, and education.

For detailed information and complete nomination instructions for these awards, visit the ASHS web site.

**For Professional and Career Awards:
ashs.org/awards/professional**

**For Student Awards:
ashs.org/awards/student**

In addition, ASHS Working Groups also present awards. Nomination instructions and deadlines vary.

**For more information about Working Group Awards, go to:
ashs.org/awards/wg**

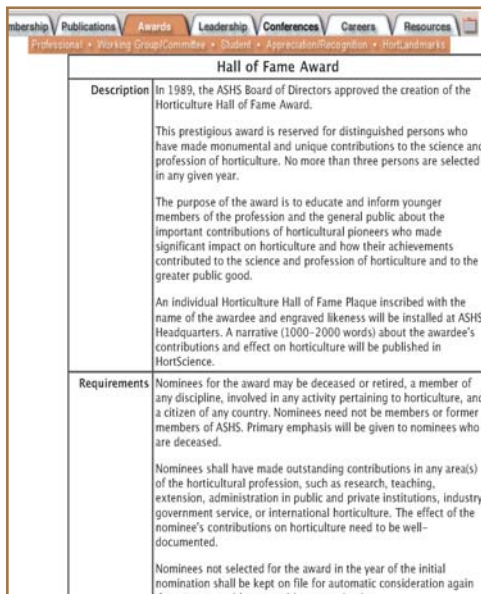
Submit Professional and Career Award Nominations Online in 4 Easy Steps

Step 1: Go to the Professional Awards Page on the ASHS web site and click on the appropriate award category.

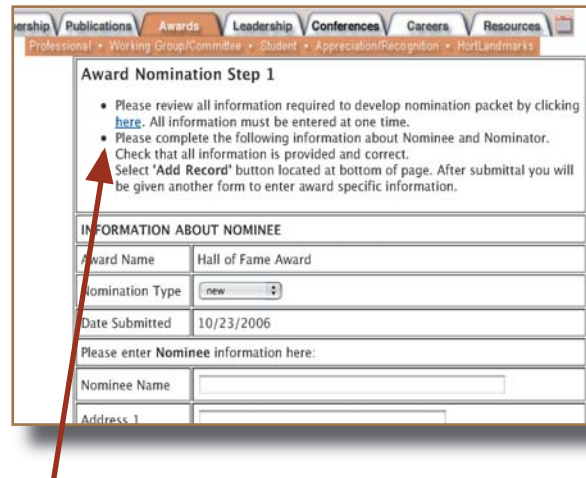
ashs.org/awards/professional



Step 2: A detailed description of the award and its requirements comes into view (in this case, the ASHS Hall of Fame Award). Scroll to the bottom of the page and click on the link “View Form.”

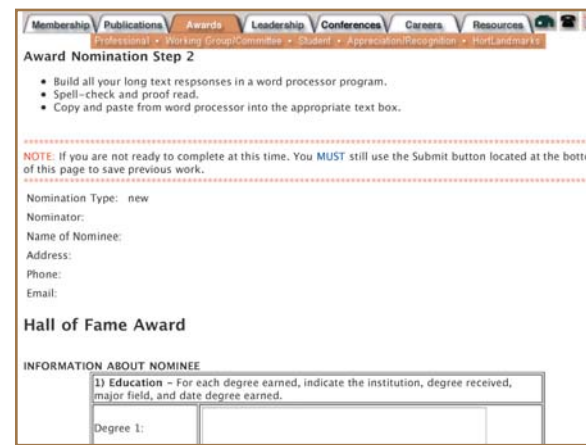


Step 3: The “View Form” link open the nominations. No need to download forms and mail, just fill in the information blanks and click “submit.”



Click here to view and print a checklist before filling out the form

Step 4: A second page of the nomination form comes into view. Again, fill in the blanks with the appropriate information and then click “submit.”



If you have additional questions or problems in submitting online nominations, please contact Mary McGuire, 703-836-4606, ext 300; e-mail: mmcguire@ashs.org.

Easy Payment Plan Makes Donating “Painless”

We’ve all seen the TV infomercials for many great, can’t-be-without products, such as the *Acme Combination Vegetable Slicer/Dicer*, *Heart Defibrillator*, *Portable GPS Unit*—all for 20 easy payments of . . .

While there is no question that these are outstanding products that we can acquire with these “easy payment plans,” there is also something truly worthwhile available to ASHS Members under a similar easy plan—the ASHS Endowment Fund!

A few years ago, long-time ASHS Member Katie Perry approached ASHS and asked if there was a way that she could give a monthly donation to the Endowment Fund and have it charged to her credit card. Says Katie, “Over the last 7 years, I have given a monthly donation to the Endowment Fund and it has been completely painless and easy! ASHS charges my donation to my credit card, and I don’t have to do a thing! I plan to continue this for many years to come, so someday I hope to be able to say I made a significant contribution to the ASHS Endowment Fund.”

Now with ASHS’ secure commerce servers in place, any ASHS Member

can also take advantage of this great, “easy payment plan” to make a U.S. tax-deductible monthly donation to the Endowment Fund—automatically! You choose the amount you would like to donate each month, when during the

Over the last 7 years, I have given a monthly donation to the Endowment Fund and it has been completely painless and easy!

—ASHS member Katie Perry

month you’d like the charge to occur, and you will be giving to a fund that has assisted hundreds of graduate and undergraduate students to travel and participate in the ASHS Annual Conference and supported students through the ASHS Scholarships program. It is as simple as that!

“I have always admired those who are able to give large gifts to their chosen charities and organizations,” Katie adds. “While I don’t think I’ll ever attain the financial status of a philanthropist, I can chip away over many years and make a significant donation over time.” And indeed it does add up! Katie Perry is comfortably in the Supporters (\$2500–\$4999) category of the

ASHS Endowment Fund with, as she says, “painless and easy” donations.

From its humble beginnings at \$5000 in February 1982, the ASHS Endowment Fund is now very near the \$500,000 mark through the generosity and dedication of thousands of ASHS Members. The year 2007—the 25th Anniversary of the ASHS Endowment Fund—can see the Society achieve this notable goal of a half-million dollar endowment. A Silver Anniversary indeed!

If you are interested in learning how to become involved in “easy payment” donation program, contact ASHS Executive Director **Mike Neff** (mwneff@ashs.org). I will be happy to get you started!

But wait! There’s more! If you act within the next 20 minutes . . .

ASHS Endowment Fund

Thank you to the following contributors (October 2006)

Carmen Cid-Ballarín,
Tenerife, Spain

Elsa DuToit,
Pretoria, South Africa

Wol S. Kim, Gwangju, Korea

Renaë Moran,
Monmouth, Maine

Katharine Perry, Raleigh, N.C.

John Ward, Norwalk, Ohio

Established in 1982, the ASHS Endowment Fund is intended to promote excellence in horticulture through student scholarship and other educational tools.

Contact ASHS at 703.836.4606 or e-mail ashs@ashs.org for additional details.

www.ashs.org/endowment

ASHS Horticulture Pods and HortTalks



ASHS Horticulture Pods

- includes presentations on history, teaching methods, and research findings presented at the 2005 ASHS Annual Conference in Las Vegas, Nev.

HortTalks

- includes presentations on history, teaching methods, and research findings presented at the 2006 ASHS Annual Conference in New Orleans, La. Also included: 2006 William A. “Tex” Frazier lecturer Paul Soniat’s haunting song “Below the Water Line”

ashs.org/resources/videoworkshopseries

(ASHS Horticulture Pods and HortTalks are separate free iTunes subscriptions)

HortOpportunities

URBAN LANDSCAPE SOIL SCIENTIST—The Morton Arboretum invites applications for Urban Landscape Soil Scientist position, to conduct research in applied soil science emphasizing the growth, maintenance, and function of urban landscape trees, their roots, and their environments. Primary focus on improving disturbed urban soils; remediating soil deterioration around existing trees; and improving urban planting sites. Expected to publish in scientific, professional, and popular journals; obtain extramural funding; interact with professional and scientific communities; and contribute to Arboretum education and horticultural programs. *Core qualifications.* PhD in soil science or related area; Certified Professional Soil Scientist status (or attain in 1–2 years). Expertise in horticultural and/or ecological aspects of soil science; soil analysis, mapping, and interpretation; and modern statistical analysis. **Application review begins October 23, continuing until position is filled.** Please send letter, curriculum vitae, statements of research and related interests and experience, and contact information for three references to: The Morton Arboretum, Human Resources, 4100 Illinois Route 53, Lisle, IL 60532 or jobs@mortonarb.org. For further information contact Director of Research Clement Hamilton or Senior Scientist Gary Watson, at 630-719-2416. *The Morton Arboretum is a 1,700-acre public botanic garden devoted to the planting and conservation of trees and woodlands. EOE.* (Posted 8-31-06)1006/P-9013



ASSISTANT RESEARCH PROFESSOR (Sweetpotato and other vegetable crops)—Twelve-month, non-tenure track, 100% research appointment with the North Mississippi Research and Extension Center at the Pontotoc Ridge-Flatwoods Branch Experiment Station <http://www.msucare.com/nmrec>. The individual will work closely with Mississippi State University scientists, the Mississippi Sweetpotato Council, Mississippi Bureau of Plant Industry, and the USDA/ARS to address issues related to sweetpotato production. Interdisciplinary participation at the state and regional level will be expected, as well as membership in professional societies. A research program will focus on developing profitable sweetpotato production systems for the Mississippi Sweetpotato Industry. Areas of emphasis include, but are not limited to, foundation variety program management, plant nutrition, harvesting techniques, post harvest storage and handling, and evaluation of alternative crops that best-fit sweetpotato production strategies. Minimum qualifications include a PhD in Horticulture, Plant Science, Soil Science, or other closely related field. Candidates who are ABD with a completion date of December 31, 2006 will be considered. View specific duties for requisition number 2592 online <http://www.jobs.msstate.edu>. Apply online, and send cover letter, curriculum vitae, official transcripts, and three (3) letters of professional reference to Dr. Mark W. Shankle, Mississippi State University, 8320 Hwy. 15 South, Pontotoc, MS 38863. Additional requests can be made to shankle@ra.msstate.edu. **Screening of applicants will begin on October 31, 2006 and will continue until a suitable candidate is identified.** *MSU is an AA/EOE.* (Posted 9-22-2006)1006/P-9031

ASSISTANT/ ASSOCIATE PROFESSOR/PROFESSOR OF VITICULTURE (Tenure Track)—Dept. of Viticulture and Enology, Calif. State Univ. Fresno. Vacancy #07TAG003. AY 2007/2008. Rank/salary dependent upon academic preparation and professional experience. Established record of research, publication, and grant writing desirable. 50% teaching (undergraduate/graduate), 50% research, depending upon departmental needs. PhD in Plant Science, Plant Physiology, Horticultural Science, Precision Agriculture, or closely related discipline preferred. ABD candidates may be considered for a lectureship (temporary position) with possible conversion to tenure track upon doctorate completion. Master of Science in Viticulture or related discipline, with minimum of 5 years viticulture experience and history of publication required for tenure track appointment. Associate Professor or Professor appointment requires established and outstanding record of

research, publication and successful grant writing commensurate with respective rank. Initially, the successful candidate will be given a twelve-month assignment to teach general viticulture, mechanized viticulture, and advanced grape and vine management; advise students; supervise research projects; may also include web-enhanced and/or web-based instruction. Close interaction and cooperation with grape and wine industries is expected. Vacancy announcement: <http://www.csufresno.edu/aps/vacancy/07TAG003.pdf>. Contact: Ken Fugelsang, Search Committee Chair, Department of Viticulture and Enology, Calif. State Univ., Fresno, 2360 E. Barstow M/S VR 89, Fresno, CA 93740-8003, (559) 278-2791, Fax (559) 278-4795, E-mail: kennethf@csufresno.edu. For full consideration, submit letter of intent, application, curriculum vitae, qualifications, representative publications, teaching evaluation summaries, and three letters of recommendation by 11/30/06. **Open until filled.** (Posted 9-11-06)1006/P-9020



COOPERATIVE EXTENSION TURFGRASS SPECIALIST—University of California, Riverside. The Department of Botany and Plant Sciences invites applications for an assistant level Cooperative Extension (CE-75%)/Agricultural Experiment Station (AES-25%) position, which is an academic career-track, fiscal year (11-month) appointment in Turfgrass Management in the Department of Botany and Plant Sciences at the University of California, Riverside. This position provides an opportunity for an individual who can develop a vigorous, innovative, and independent extension and research program within the California turfgrass industry. Responsibilities include strong program leadership, collaboration, and support in mission-oriented research and educational activities related to turfgrass science. The candidate will be expected to establish and maintain excellent relations with clientele at the regional, statewide, and national levels in turfgrass management. The candidate will also be expected to maintain an applied, extramurally-funded research program and provide direction to an existing in-field turfgrass research facility with an established web site <http://ucrturf.ucr.edu>. Research opportunity areas include turfgrass variety improvement and selection, plant stress physiology related to temperature and water, and natural resource concerns, including water allocation and management, energy conservation, atmospheric quality, and considerations of the interface of turfgrass landscapes with native and production agricultural areas. The candidate would be expected to participate in committee service, provide academic leadership at the statewide level, and engage in professional societies related to the environmental horticulture area. The individual will be joining the UCR campus at a time of rapid expansion and substantial opportunities to develop significant extension and research programs. Opportunities are available for supervising graduate students **The review of applications will begin November 30, 2006 and applications will be accepted until the position is filled.** The position is available as of July 1, 2007. Applicants must hold a PhD in environmental horticultural science or a related field with a minimum of 1–3 years of postdoctoral experience. Salary is commensurate with education and experience. Interested individuals should submit the following: (1) a curriculum vitae (2) statements of interest in both research and extension, activities, and (3) three letters of reference to: Chair, CE Specialist in Turfgrass Management Search Committee, Department of Botany and Plant Sciences, 2150 Batchelor Hall, University of California, Riverside, CA 92521; e-mail: bpssearch@ucr.edu; phone: (951) 827-4619; fax: (951) 827-4437. Information about the College is available at <http://www.cnas.ucr.edu/> (see also <http://www.ucrturf.ucr.edu>). *The University of California, Riverside has an active career partner program, and is an Affirmative Action equal opportunity employer committed to excellence through diversity.* (Posted 9-20-06)1006/P-9027

HortOpportunities

MERCER AND PUTNAM FELLOWSHIPS: WOODY PLANT RESEARCH—The Arnold Arboretum of Harvard University. With a strong focus on collections-based research, fellowships at the Arnold Arboretum of Harvard University offer significant opportunities for scientists dedicated to increasing our knowledge of trees, shrubs and vines. Graduate students, post docs, as well as mid-career professionals and researchers are encouraged to apply. Together with fellowship support, the Arnold Arboretum provides exceptional resources for woody plant research. The living collections total 15,000 specimens and are distinguished by over a century of documentation and study. *Acer, Betula, Carya, Fagus, Magnolia, Quercus, Stewartia, Syringa, and Tilia* are particularly well represented, as are the floras of China, Japan, and Korea. The Harvard Botanical Library contains 250,000 volumes, while the Harvard University Herbaria holds over 5,000,000 specimens. In 2007, the stipend for Mercer/Putnam Fellows is \$40,000 per annum plus benefits, with up to \$12,000 additional funds available for research costs. Term appointments can be flexible, ranging from 6 months to 2 years. Fellows are required to publish the results of their studies in professional or academic journals. Participation as an instructor for Arnold Arboretum education programs is encouraged. *How to apply.* Applications are accepted throughout the year and applicants are initially requested to provide a curriculum vitae and a brief description of research and project interests to: Richard Schulhof Arnold Arboretum 125 Arborway Jamaica Plain, MA 02130; e-mail: richard_schulhof@harvard.edu; 617.524.1718 x133 (Posted 9-6-06_1006/P-9016)

ASSISTANT/ASSOCIATE AREA AGENT, AGRICULTURE (100% Extension)—The University of Arizona Cooperative Extension—Pinal County has a full-time opening for an Assistant/Associate Area Agent, Agriculture. The area agent is expected to conduct an applied research-based extension program designed to address current and future agricultural production issues and challenges in the areas of agronomy, plant nutrition, economics, farm mechanics and related areas. Maricopa, Pinal, and Pima Counties will be the counties covered by this position, which produce 152,000 acres of cotton, 49,000 acres of cereal grains and 117,000 acres of alfalfa, collectively. This position requires the ability to travel statewide using all modes of transportation; travel regionally and nationally is desired. It will be housed in Casa Grande, Ariz., Pinal County. For a complete description of the duties and responsibilities of this position, please go to our web site at <http://cals.arizona.edu/pinal/>. To apply, complete an online application for Job #36025 at <https://www.uacareertrack.com/>. Be prepared to attach a curriculum vitae & letter of interest. In addition to online application materials, please send a transcript of highest degree earned sent directly from the writer to: Richard D. Gibson, Pinal County Cooperative Extension, 820 E. Cottonwood Lane #C, Casa Grande, AZ 85222. **Review of materials will begin on October 3, 2006, and continue until the position is filled.** *The University of Arizona is an EEO/AA Employer M/W/D/V.* (Posted 9-14-06)1006/P-9022

ASSISTANT PROFESSOR: POMOLOGY—The Horticulture Department at the University of Georgia invites applications for a 12-month tenure-track faculty position in pomology. The position will have research (51%) and teaching (49%) responsibilities and will be housed at the Athens Campus of the University of Georgia, Athens, Ga. The individual will be responsible for developing and maintaining an active program in applied and/or fundamental research addressing the needs of commercial fruit growers in Georgia. The successful candidate may develop a region based crop sustainability and/or organic fruit culture program, while establishing nationally recognized research, possibly focused on small fruit sustainability. Equally important is the need for instruction that will include undergraduate and graduate courses commensurate with the appointment; advising undergraduate and graduate students; and offering leadership to the College's newly funded Certificate Program in Organic Agriculture. The incumbent will be expected to garner external programmatic support and to participate in Departmental, College and University service/governance. Candidates must have a PhD in Horticulture or related

discipline with experience in pomology. An established record of scholarly research and instruction activities particularly related to sustainable fruit production is preferred. The ability to work in a team environment with multidisciplinary collaboration is central to mission of this position. Excellent oral and written communication skills are necessary. **Screening will begin 15 December 2006 and will continue until a suitable applicant is identified.** Applicants should submit letter of application, curriculum vitae, transcripts, and three letters of reference to: Dr. Kathryn Taylor, Department of Horticulture, 21 Dunbar Road, Byron, GA 31008. Contact information: kctaylor@uga.edu; phone: 478.956.6417. *The University of Georgia is an Affirmative Action/Equal Opportunity Employer.* (Posted 9-8-06)1006,1106/P-9019

ASSISTANT PROFESSOR, HORTICULTURAL CROP PRODUCTION/PHYSIOLOGY—The Horticultural Sciences Department at the University of Florida is accepting applications for a tenure-track Assistant Professor position in Horticultural Crop Production/Physiology, in Gainesville, Florida. This is a 12-month appointment, 50% research: 50% teaching, although the assignment may change in accordance with the needs of the department. The incumbent will establish and lead an externally funded statewide research program in an area of horticultural crop production, such as nutrient management, sustainable production systems, and/or plant management systems. He or she will also team-teach courses in Introductory Horticulture and Organic/Sustainable Production Practices, as well as train graduate students. Applicants must have a PhD in horticulture, crop science, plant science, or a closely related area. Post-doctoral experience is desirable. The incumbent must have demonstrated skills in verbal and written communication. Send a pdf file containing curriculum vitae, a one page description of teaching philosophy and research interests, and names and addresses (including e-mail) of five references to Dr. Rebecca Darnell, rld@ufl.edu. Review of applications will begin immediately and it is anticipated that interviews will begin in early December. *An Equal Opportunity/Affirmative Action Employer.* (Posted 9-5-06)1006/P-9015

LOCATION DIRECTOR/RESEARCH LEADER—USDA—ARS Appalachian Fruit Research Station (AFRS), Kearneysville, WV. This is a permanent full time position of Supervisory Research Entomologist/Horticulturist/Geneticist (Molecular)/Plant Pathologist, or Plant Physiologist. The incumbent will lead a multi-disciplinary team of 18–21 scientists conducting basic and applied research to develop science and technology that maximize productivity and quality of deciduous fruit crops, enhancing production and handling efficiency, environment preservation, fruit nutritional value and safety, and the competitiveness of American producers in the global market. The incumbent conducts personal research within own area of scientific expertise on critical problems of temperate fruit production and/or handling. The incumbent will be responsible for enhancing and maintaining the scientific creativity and productivity; supervising personnel; managing the human, fiscal and physical resources; ensuring the proper reporting of scientific research information. The incumbent must work closely with the fruit industry nationally and public and private research institutions nationally and internationally. The AFRS has excellent laboratory, greenhouse and growth chamber facilities, computer center, and 500-acre research farm. It is located in the picturesque Eastern Panhandle of West Virginia in the proximity of Washington, D.C., Baltimore, Md., and Frederick (Md.)—Rockville (Md.) biotechnology corridor. U.S. citizenship is required. PhD in entomology, genetics, horticulture, plant pathology, or plant physiology is desired. Annual salary range: \$91,407 to 139,774 plus benefits. For details and application procedures see the announcement at www.afm.ars.usda.gov/divisions/hrd/index.html and click on Ann#:ARS-X6E-0274. For further information contact Dariusz Swietlik, 215-233-6668, Dariusz.Swietlik@ars.usda.gov. **Applications must be postmarked by October 30, 2006.** *USDA—ARS is an Equal Opportunity Employer.* (Posted 9-8-06)1006/P-9018

Continued on p. 14

HortOpportunities

Continued on p. 13

ASSOCIATE/PROFESSOR AND RESEARCH COORDINATOR—Sweet Potato Research Station, Chase, Louisiana. The position is 80% research and 20% administration (research coordinator of the Sweet Potato Research Station). The individual will be a faculty member of the LSU AgCenter Northeast Region. Partial appointment in the LSU Department of Horticulture is available. The successful candidate will provide leadership for and coordinate the research programs of the Sweet Potato Research Station. In concert with the Northeast Regional Director, he/she will manage the station budget, personnel, land resources, facilities, and equipment by providing day to day administrative and budgetary leadership including allocations of labor and other resources to the various research projects at the station, hiring, supervision, and evaluation of station faculty and support personnel, and procuring supplies and major equipment. In addition, he/she will work cooperatively with other LSU AgCenter scientists and the Louisiana Sweet Potato Growers Association to address problems and increase profitability of growers through research conducted at the Sweet Potato Research Station as well as off-station sites throughout Louisiana. As resident coordinator, the successful candidate also will oversee the foundation seed production operations and sales functions of the Sweet Potato Research Station. Salary will be commensurate with qualifications and experience. For details and application procedures see the announcement at http://www.lsuagcenter.com/en/administration/about_us/Human_Resources/Job_Opportunities/nonclassified/033252+ASSOC++PROFESSOR++RESEARCH+COORDINATOR++CHASE+LA.htm. Applicants should submit letter of application, complete professional resume, transcripts of all college credits, three letters of recommendation, and other pertinent data to Dr. Robert Hutchinson, Regional Director, Scott Research and Extension Center, 212 Macon Ridge Road, Bldg. B, Winnsboro, LA 71295. (Posted 9-20-06)1006/P-9026

RESEARCH ASSOCIATE/ASSISTANT—Plant Sciences, Inc. is currently seeking a Research Associate/Assistant for its Tissue Culture Laboratory, located in Watsonville, Calif. The incumbent would be responsible for the implementation of plant tissue culture protocols developed in association with small fruits and vegetable breeding and propagation programs. Primary responsibilities include meristem culture; shoot tip culture, micropropagation, and ex vitro acclimatization; and PCR based projects. Qualifications include a MS/BS degree in Plant Science, Horticulture, Plant Molecular Biology or related field with hands-on experience in plant tissue culture. Trainings in molecular marker technology would be desirable. Interested applicants should submit resume with salary requirements to: Plant Sciences, Inc. Attn: Mr. Richard J. Noonan, Business Manager, 342 Green Valley Road, Watsonville, CA 95076; Fax: 831-728-4967; e-mail: jobs@plantsciences.com. **Review of applications will continue until the position is filled.**

(Posted 9-21-06)1006/P-9030

HortOpportunities Advertising Rates

General Ads:

up to 200 words \$230
each additional 10 words \$15

Assistantships/Fellowships/Postdoctoral ads

200 words \$110
each additional 10 words \$10

Web-Only ads (posted for 90 days)

up to 200 words \$230
each additional 10 words \$15

Highlight any ad:

Box your ad: \$15
Add your logo: (black & white in Newsletter, color on Web ads): \$15

Price includes posting for 90 days on the ASHS web site and one insertion in the ASHS Newsletter (optional)

Send e-mail ad requests to plcmnt@ashs.org. Include: ad copy; name of contact person; billing address; e-mail; phone no.; fax no.; and the application deadline. Submission of listings implies consent to abide by EO/AA guidelines. For more information visit ashs.org/hortopport/advertise.html.

Assistantships/Postdoctoral Opportunities

ASSISTANTSHIP—The Division of Plant and Soil Sciences at West Virginia University is seeking a qualified and highly motivated individual for the MS degree program in Horticulture. Assistantship stipend is \$13,008 per 12 months with full tuition waivers. The successful candidate will conduct research in highbush blueberry production with special emphasis on efficiency of pollination. Students with backgrounds in horticulture, biology, botany, entomology or closely related fields are encouraged to submit a graduate application that includes a resume, college transcripts, GRE scores, TOEFL scores (foreign students), and three letters of reference. Applicants with experience in blueberry production may be given preference. For additional information contact Dr. Todd West (e-mail: Todd.West@mail.wvu.edu), Division of Plant and Soil Sciences, P.O. Box 6108, Morgantown, WV 26506. Phone: (304) 293-6023. **The position is available 1 Jan. 2007 or until a suitable candidate is found.** WVU is an AA/EEO Employer. (Posted 9-8-06)1006/P-9017

GRADUATE FELLOWSHIPS AND ASSISTANTSHIPS: PLANT SCIENCES, MICHIGAN STATE UNIVERSITY—Michigan State University is pleased to announce Graduate Fellowships and Assistantships in the plant sciences. Graduate assistantships are available in 12 departments or programs as listed below. In addition, the Plant Science Fellowships provide outstanding candidates with funding for the first two years of study. Fellows may select a department upon enrollment, or if desired, may perform research rotations in any plant science-related laboratory on campus, regardless of department or program. After the first year, rotating students will choose a major professor and graduate degree program; after the second year, funding will be provided by the major professor and department. Each Plant Science Fellow also will receive a \$2000 professional enhancement grant to facilitate travel to scientific meetings or other relevant activities. Participating departments and graduate programs include: Biochemistry and Molecular Biology (www.bch.msu.edu); Cell and Molecular Biology (www.ns.msu.edu/cmb); Crop and Soil Sciences (www.css.msu.edu); Ecology, Evolutionary Biology and Behavior (www.msu.edu/~eebb); Entomology (www.ent.msu.edu); Forestry (www.for.msu.edu); Genetics (www.ns.msu.edu/genetics); Horticulture (www.hrt.msu.edu); Kellogg Biological Station (www.kbs.msu.edu); MSU-DOE Plant Research Laboratory (www.prl.msu.edu); Plant Biology (www.plantbiology.msu.edu); Plant Breeding and Genetics (www.hrt.msu.edu/pbgp/index.html); and Plant Pathology (www.plantpathology.msu.edu). To obtain more information about the Plant Science Fellowships or Plant Science programs at Michigan State University, please contact: Ms. Judy Ward; (517) 355-0301; wardj@msu.edu; Graduate School, Michigan State University, 118 Linton Hall, East Lansing, MI 48824, USA; or visit the MSU Plant Science Web Page at: grad.msu.edu/plantsci.htm. (Posted 9-5-06)1006/P-9014

RESEARCH TECHNICIAN—The Agricultural and Environmental Research Station at West Virginia State University Research and Development Corporation, Gus R. Douglass Land-Grant Institute invites applications for the position of full time Research Technician. The successful applicant will assist and/or conduct lab/greenhouse/field research to support the greenhouse tomato breeding and alternative agriculture projects. The lab is seeking an energetic and highly motivated individual. A bachelor's degree in biology, genetics or other related science is required. Previous research experience is highly desirable. For a complete job description, required qualifications, and instructions on how to apply, visit <http://aceop.wvstateu.edu/employment.htm>. **Closing date: until filled.** *West Virginia State University Douglass Institute is an equal opportunity, affirmative action institution that does not discriminate on the basis of race, color, religion, sex, national origin, age, disability, veteran status, or sexual orientation in its programs and activities* (Posted 9-19-06)1006/P-9024

Horticultural Science Calendar

* Indicates new or changed entry.

October 2006

8–11 Oct.—Annual Meeting: International Plant Propagators' Society, Southern Region of North America. Charlotte, N.C. [contact: David L. Morgan; e-mail DavidLMorgan@sbcglobal.net; www.ipps.org/southernna].

11–13 Oct.—CalScape Expo 2006. Palm Springs, Calif. [Sponsored by the Plantscape Industry Alliance, 493 S. Highland Ave., Ukiah, CA 95482-4633; tel 707.462.2276; fax 7-7.463.6699; e-mail pia@pia@piagrows.org; www.piagrows.org].

14–18 Oct.—6th New Crops Symposium: Creating Markets for Economic Development of New Crops. San Diego, Calif. Sponsors: Association for the Advancement of Industrial Crops, Purdue Center for New Crops and Plant Products, and ASHS. [www.aaic.org or www.hort.purdue.edu/newcrop].

17–20 Oct.—First Colombian Horticultural Congress. Bogota, Universidad de Bogota Jorge Tadeo Lozano. Organizer: Colombian Society for Horticultural Science. [Alexander Cooman, tel. ++57-1-8650218/9; Gerhard Fischer, telfax. ++57-1-3165498; e-mail: soccolhort@gmail.com; www.soccolhort.com].

20 Oct.—Urban Ecology: Celebrating 10 Years of Chicago Wilderness. 2006 Janet Meakin Poor Symposium. Chicago Botanic Garden, Glencoe, Ill. *Call for posters: deadline 30 Aug. 2006.* [contact: Kayri Havens, Program Chair; khavens@chicagobotanic.org; www.chicagobotanic.org/symposia/].

31 Oct.—12 Dec.—UMass Extension Green School. Radisson Hotel, Millford, Mass. Choose from 2 sections: Landscape Management or Turf Management. Classes run for 12 sessions. [tel. 413.545.0895; www.UMassGreenInfo.org].

November 2006

1–3 Nov.—New England Greenhouse Conference. DCU Centre, Worcester, Mass. Features Perennial Production Short Course. [Cindy Delaney, Show Coordinator, tel. 802.655.7769; fax 802.655.6098; info@delaneymeetingevent.com; www.negreenhouse.org].

2–5 Nov.—Plasticulture 2006—the 33rd Congress. San Antonio, Texas. Sponsor: American Society for Plasticulture. Held in conjunction with the Irrigation Association's 27th International Irrigation Show. [plasticulture.org].

3–4 Nov.—23rd Annual Hydroponic and Organic Grower's Conference. Wyndham Orlando Resort, Orlando, Fla. Topics include: steps to improving yields and quality, lighting, water and nutrient management, organic growing, marketing your product, the latest on safe insect and disease control and many more. [www.cropking.com/conference.shtml].

5–7 Nov.—27th Annual International Irrigation Show. Henry B. Gonzalez Convention Center, San Antonio, Texas. [irrigation.org].

***29 Nov. 2006—Athletic Field Symposium: Specification, Design, Construction, and Renovation of Sports Fields.** Gillette Stadium, Foxborough,

Mass. Presented by the Univ. of Massachusetts, Amherst Extension Turf Program in partnership with the New England Regional Turfgrass Foundation and Waverly Landscape Associates, Inc. [Mary Owen, tel. 508.892.0382 mowen@umext.umass.edu or Jason Lanier, tel. 413.545.2965 jdlanier@umext.umass.edu].

December 2006

3–6 Dec.—4th ISHS International and 8th National Symposium on Seed, Transplant and Stand Establishment of Horticultural Crops: "Translating seed and seedling physiology into technology." San Antonio, Texas. [contact: Daniel Leskovar, e-mail: d-leskovar@tamu.edu; http://sest2006symposium.tamu.edu]

3–6 Dec.—4th International Bemisia Workshop followed by the International Whitefly Genomics Workshop (7–8 Dec.). Hawk's Cay Resort I, Duck Key, Fla. Hosted by the USDA–ARS and the Univ. of Florida IFAS. [http://conference.ifas.ufl.edu/bemisia/].

January 2007

4–6 Jan.—ASHS—Northeast Region Annual Meeting. University of Maryland, College Park. [Carolyn DeMoranville, Secretary-Treasurer, University of Massachusetts, Cranberry Experiment Station; carolynd@umext.umass.edu; www.ashs.org/regional/northeast07.html].

24–27 Jan.—WINTERGreen Expo and WINTER-schoolConference. Classic Center, Athens, Ga. Sponsored by the Georgia Green Industry Association. [P.O. Box 639, Epworth, GA 30541; tel. 706.632.0100; info@ggia.org; www.ggia.org].

February 2007

3–7 Feb. Southern Region—ASHS Annual Meeting. Mobile, Ala. [www.srashes.org]

***8–9 Feb.—National Workshop on Plant Breeding: a Vital Capacity for U.S. National Goals.** Raleigh, N.C. Co-organizers: CSREES, USDA, the Southern Association of Agricultural Experiment Station Directors, and N.C. State University's Departments of Crop Science and Horticultural Science. *Early registration deadline has been extended to 30 Nov. 2006.* [Ann Marie Thro, athro@csrees.usda.gov; www.csrees.usda.gov/newsroom/events/pdfs/pbagg_02.pdf].

***9–12 Feb.—6th North American Strawberry Symposium/North American Strawberry Growers Association 2007 Berry Congress.** Crowne Plaza Hotel, Ventura Beach, Calif. [www.nasga.org].

March 2007

11–15 Mar.—Cairo 10th International Conference on Energy & Environment (EE10). Luxor/Aswan, Egypt. [http://eecairo.com].

***19–23 Mar.—International Symposium on Medicinal & Nutraceutical Plants.** Fort Valley State University, Fort Valley, Ga. *Abstract submission deadline to 30 November 2006.* [A.K. Yadav, 478.825.6830, yadav@fvsu.edu or Nirmal Joshee, 4768.825.6373, njosheen@fvsu.edu; www.ag.fvsu.edu/Conferences/ishsmnp/participants.htm].

25–28 Mar.—6th International Symposium on Fungal Endophytes of Grasses. Christchurch, New Zealand. [www.grassland.org.nz/endophyte].

April 2007

11–13 Apr.—53rd Annual Soil Fungus Conference. The Piccadilly Inn University Hotel, Fresno, Calif. [James Gerik, jgerik@fresno.ars.usda.gov; web http://soilfungus.ars.usda.gov].

29 Apr.–1 May—Fifth Annual International Greening Rooftops for Sustainable Communities, Conference, Awards & Trade Show. Hyatt Regency Minneapolis Hotel, Minneapolis, Minn. *Call for papers.* Abstracts due 29 Sept 2006, final papers due 5 Jan. 2007. [greenroofs.org/minneapolis].

June 2007

17–20 June—ASABE Annual International Meeting. Minneapolis Convention Center, Minneapolis, Minn. [American Society of Agricultural & Biological Engineers, 269.429.0300; www.asabe.org].

July 2007

16–19 July—ASHS Annual Conference. Westin Kierland Resort and Spa, Scottsdale, Ariz. [ashs.org/conferences].

October 2007

***9–13 Oct.—FAV Health 2007: Second International Symposium on Human Health Effects of Fruits and Vegetables.** Houston, Texas. Hosted by Texas A&M University. [http://favhealth2007.tamu.edu/].

2008

***2–6 Feb—Southern Region—ASHS Annual Meeting.** Adam's Mark Hotel and Convention Center, Dallas, Texas. Held in conjunction with the 2008 Southern Association of Agricultural Scientists (SAAS) Annual Convention. [www.srashes.org].

tbd—ASHS—Northeast Region Annual Meeting. Rutgers University, New Brunswick Campus, N.J.

21–24 July—ASHS Annual Conference. Rosen Plaza Hotel, Orlando, Fla. [www.ashs.org].

2009

30 Jan.–4 Feb.—Southern Region—ASHS Annual Meeting. Westin Peachtree Plaza, Atlanta, Ga. Held in conjunction with the 2009 Southern Association of Agricultural Scientists (SAAS) Annual Convention. [www.srashes.org].

***25–28 July—ASHS Annual Conference.** Millennium Hotel, St. Louis, Mo. [www.ashs.org].

2010

***7–10 Feb.—Southern Region—ASHS Annual Meeting.** Wyndham Orlando Resort, Orlando, Fla. Held in conjunction with the 2010 Southern Association of Agricultural Scientists (SAAS) Annual Convention. [www.srashes.org].

Postscript:

Cucurbitaceae 2006

More than 200 academicians and students, pathologists, entomologists, physiologists, geneticists, weed scientists, horticulturists, food scientists, commercial plant breeders, growers, and industry representatives gathered for Cucurbitaceae 2006, which was held on 16–21 Sept. in Asheville, N.C.

Amy Goldman, ASHS member and 2005 William A. “Tex” Frazier Lecturer, was the keynote speaker. Program topics included presentations on such topics as breeding and genetics, economics, entomology, and more.

For more about Cucurbitaceae 2006, visit the web site.

<http://cuke.hort.ncsu.edu/cucurbit/meetings/ccrbtceae06mtg.html>



The Cucurbitaceae 2006 conference was held in Asheville, N.C., on 16–21 Sept. Three cucurbitologists received Lifetime Achievement Awards: (l-r) ASHS Archivist/Historian **Don Maynard** (University of Florida) for Crop Production, **Harry Paris** (Israel) for Crop Breeding and **Michel Pirat** (France) for Phytopathology.

ASHS Newsletter
American Society for Horticultural Science
113 South West St., Suite 200
Alexandria, Va. 22314-2851
Address Service Requested

PERIODICALS POSTAGE
PAID AT
ALEXANDRIA, VIRGINIA
22314-2851, USA

Call for 2007 ASHS Professional, Career, and Student Award Nominations